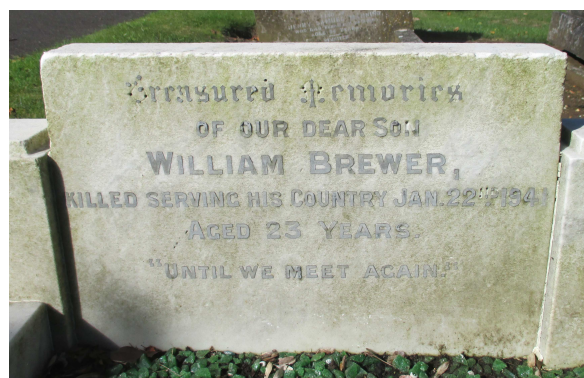


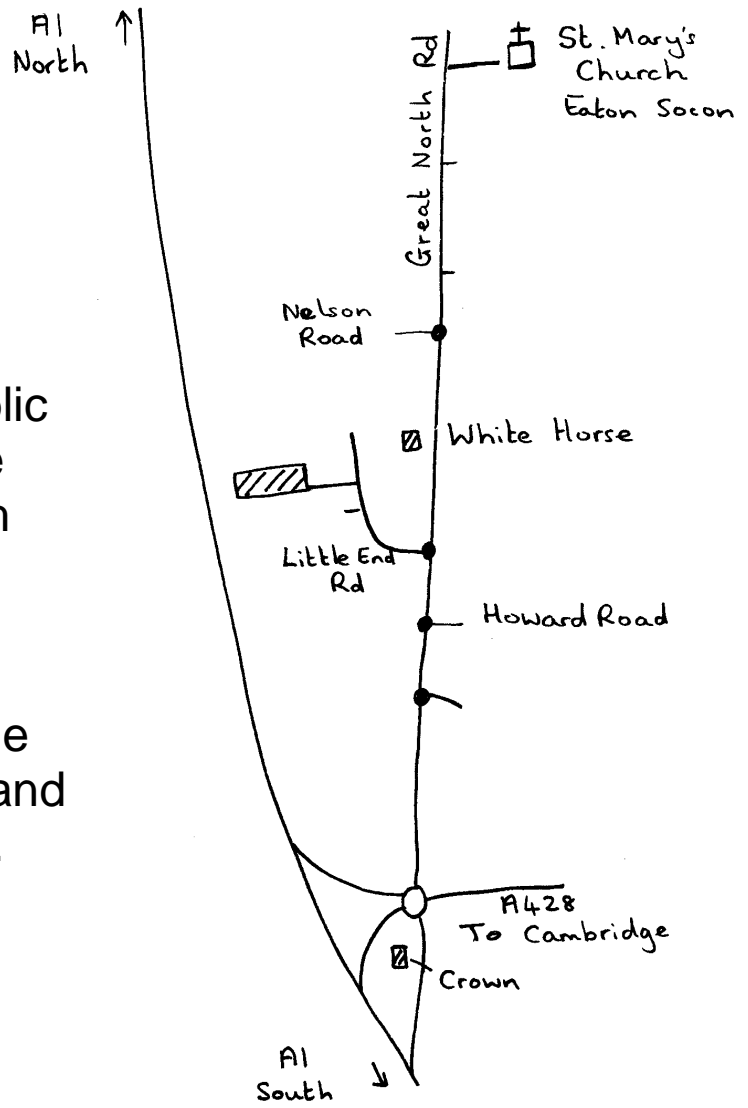
Military inscriptions in Eaton Socon Cemetery



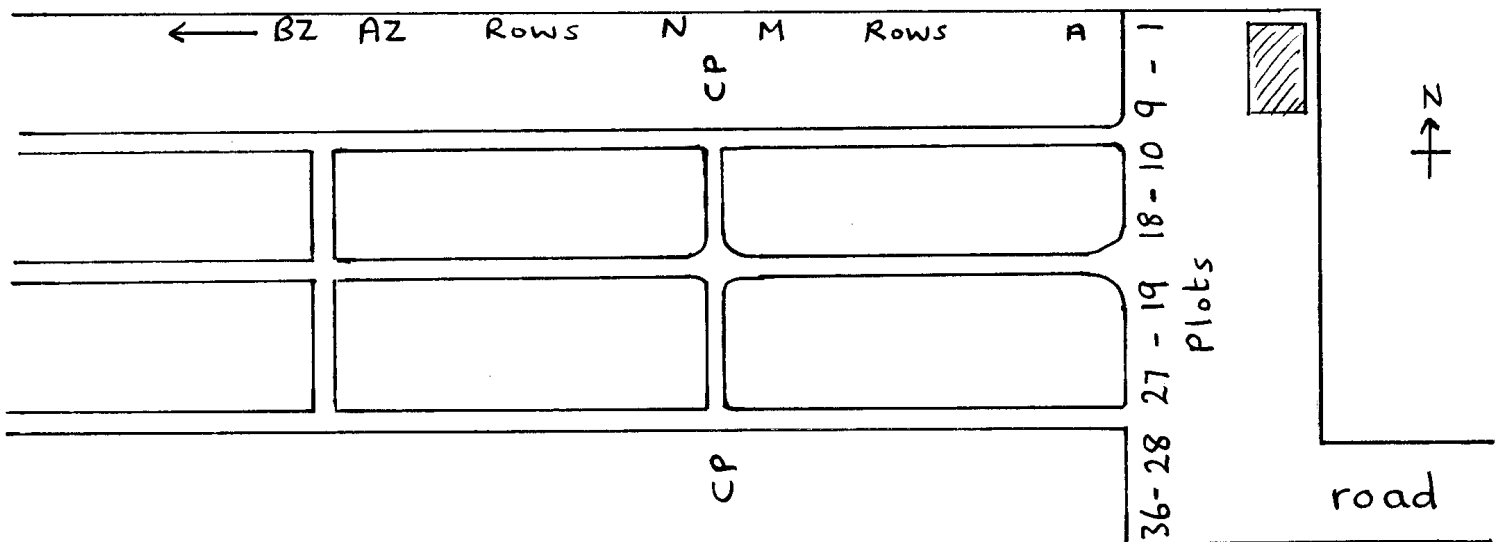
Sue Jarrett

Eaton Socon Cemetery was opened in 1930 in a field behind the White Horse Public House and had its own lane leading from the Great North Road.

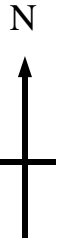
Today the access to the Cemetery is through the Little End Road Industrial Estate and between two industrial units.



The graves are clearly laid out in rows.



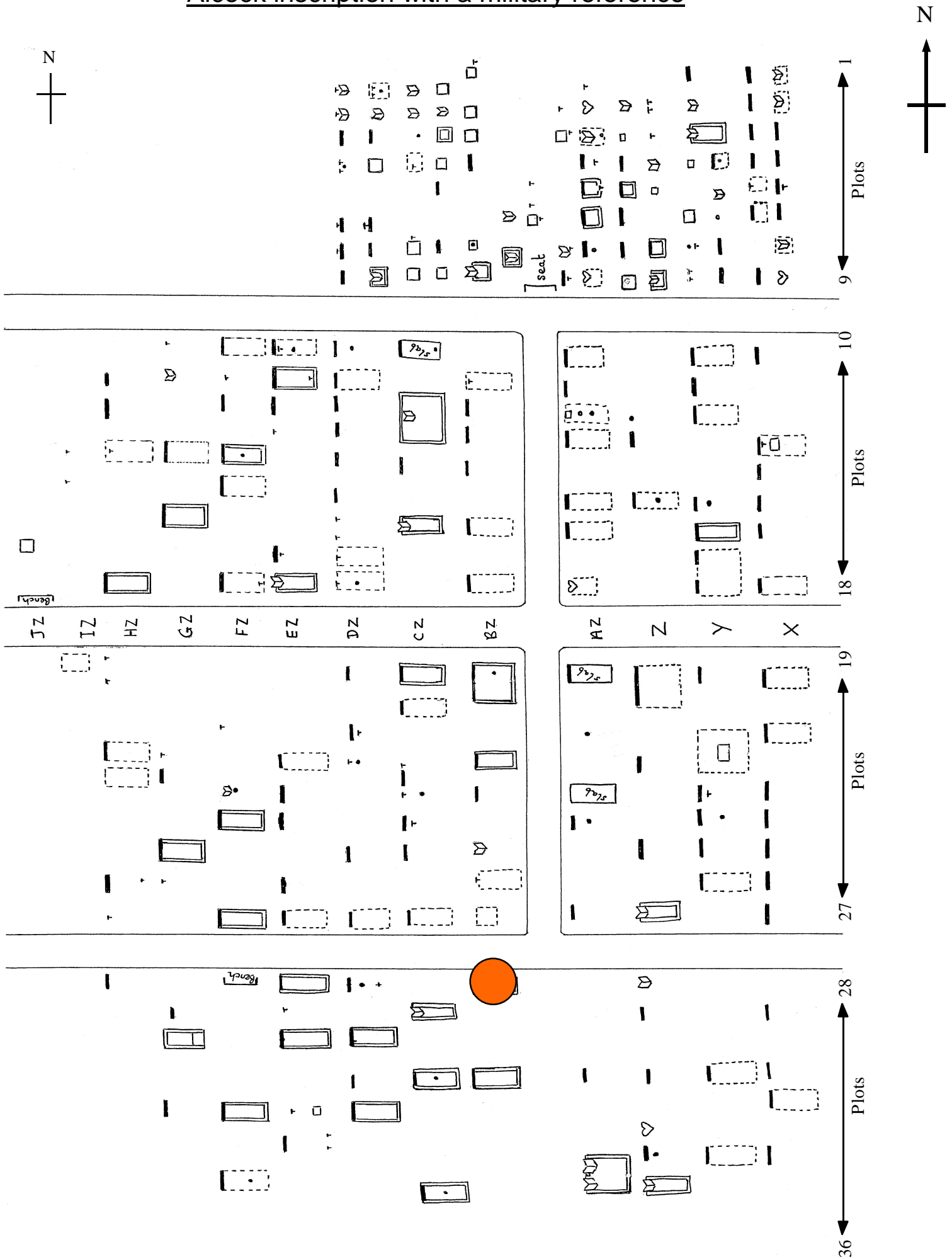
Eaton Socon Cemetery showing the position of four inscriptions with military references



1	Bailey
2	Brewer

3	Seal
4	Williams

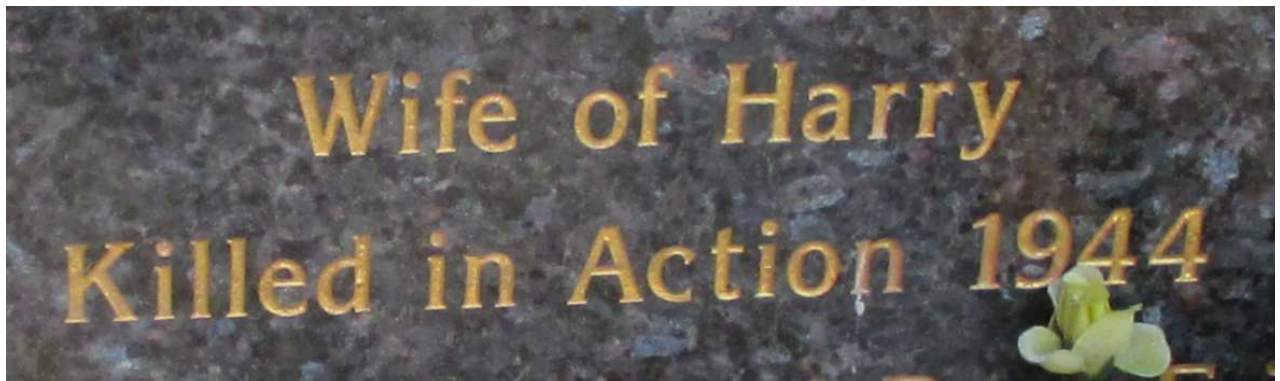
Eaton Socon Cemetery showing the position of the Alcock inscription with a military reference



William Henry Alcock

Harry Alcock is remembered on his widow's grave —
In Loving Memory of Winifred Alcock died 10th January 2000
Aged 81 years, Wife of Harry Killed in Action 1944

Plot BZ 28



Private W H Alcock, Somerset Light Infantry, no 4079708 died on 15th August 1944 aged 27 yrs and was buried in Tilly-Sur-Seulles War Cemetery. He was the son of W H A and Ethel Alcock of Manchester and husband of Winifred Alcock of Clayton, Manchester.

Christopher Joseph Bailey

1766156 Gunner C .J. Bailey
66th Searchlight Regt.R.A (Gloucesters) T.A.
16th June 1943 Aged 37
In Memory Of A Dear Husband And Father
In God's Keeping Until We Meet Again

Plot I 28



William and Keith Brewer

The family grave includes both parents, William Brewer and his sister Elsie

Keith is listed at the foot of his brother

Plots I 17 and 18

Treasured Memories Of Our
Dear Son William Brewer,
Killed Serving His Country
Jan. 22nd 1941
Aged 23 Years.
"Until We Meet Again."



Also Keith, Our Youngest Son
Killed In France July 19.1944;
Aged 23 Years



Joseph Seal

534697 Corporal J. Seal Royal Air Force

17th August 1946 Age 29

With The Lord Our Shepherd I Will Dwell Forever
In Peace

Plot J 29



Ralph Williams

In Loving Memory Of Cadet L/CPL Ralph Williams
Wyboston A.C.F.

Who Died June 14th 1952 Aged 17 Years
Always Remembered

Plot J 11

